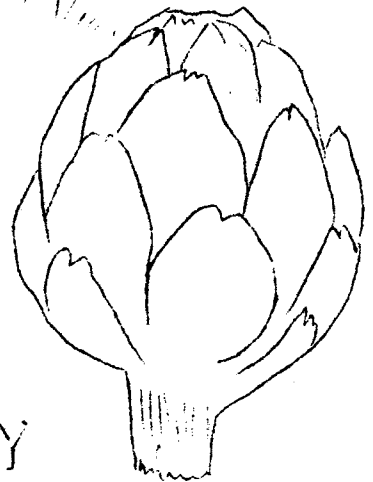
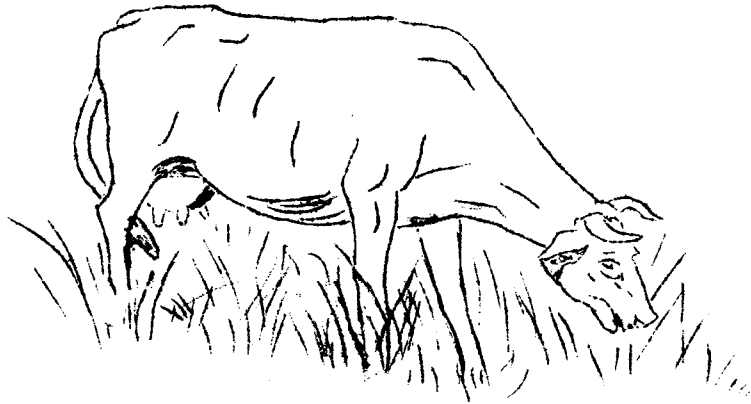


AGRICULTURAL
CROP REPORT
1948



SAN MATEO COUNTY

ISSUED BY
SAN MATEO COUNTY DEPARTMENT OF AGRICULTURE

Honorable Board of Supervisors
County of San Mateo

and

A. A. Brock, Director
State Department of Agriculture

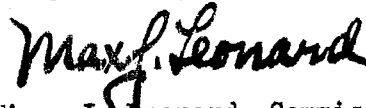
Gentlemen:

In accordance with the provisions of Section 65.5 of the Agricultural Code of the State of California, I herewith submit to you a report of the acreage, production and value of agricultural products for San Mateo County for the year 1948.

This report brings together agricultural statistics of the county including floriculture, horticulture, livestock, truck crops and field crops, and income accrued to the growers during the year 1948. The value of these figures is based entirely on the accuracy of information given by many cooperators and their willingness to give this information, together with investigations and detailed surveys made by members of this Department's staff. The figures for value are based on the gross income to the grower.

In submitting the report, we wish to express our appreciation to the many individuals, firms, official agencies and growers who have given information and otherwise helped us in this compilation.

Respectfully submitted,



Max. J. Leonard, Commissioner
Department of Agriculture
San Mateo County

MJL:ihr
200-4-49

A N N U A L C R O P R E P O R T

1 9 4 8

SAN MATEO COUNTY

BOARD OF SUPERVISORS

Thomas L. Hickey	District #1
Martin A. Poss	District #2
Henry W. Edmonds, Chairman	District #3
Alvin S. Hatch	District #4
E. R. McDonald	District #5

* * * * *

SAN MATEO COUNTY LAND USAGE

	<u>Acres</u>
Residential areas	22,880
Agricultural Crops.	34,330
Crazing Land	59,140
Brush and Timber Land	169,730

TOTAL ACRES IN SAN MATEO COUNTY 286,080

VEGETABLES

Product	Acreage	Total Yield	Total Value
Asparagus	5	450 Crates	\$ 1,800.00
Anise	15	25,500 Bunches	11,475.00
Artichokes	1,764	176,400 Boxes	705,600.00
Beans:			
Green	98	7,742 60# Crates	46,452.00
Dry	565	5,085 100# Sax	61,020.00
Fava	210	2,520 100# Sax	12,600.00
Beets, Table	92	27,600 Crates*	82,800.00
Broccoli (Sprouting)	194	38,800 Crates	135,800.00
Brussels Sprouts	962	3,367 Tons	740,740.00
Cabbage	1,138	13,656 Tons	751,080.00
Calabresi (Chicory)	12	3,720 Crates	14,880.00
Cardoni	3	9,000 Heads	4,500.00
Carrots	156	37,440 Crates	112,320.00
Cauliflower	164	90,200 Crates	135,300.00
Celery	48	62,400 Crates	187,200.00
Celery Root	18	5,130 Crates	8,208.00
Chard	34	13,090 Crates	26,180.00
Corn	42	6,300 L. A. Lugs	14,175.00
Dandelion	11	4,730 Crates	11,825.00
Garlic	15	450 100# Sax	4,500.00
Kale	7	2,520 Crates	3,024.00
Leek	18	7,740 Crates	23,220.00
Lettuce (All Var.)	754	281,925 Crates	508,491.00
Mushrooms	3	113,200 Lbs.	56,000.00
Mustard Greens	15	4,875 Crates	13,406.00
Onions, Green	24	10,800 Crates	64,800.00
Parsley	38	19,000 Crates	66,500.00
Parsnips	23	9,545 L. A. Lugs	11,931.00
Peas	1,255	42,089 Crates	126,268.00
<hr/>			
TOTALS FORWARD	7,683		\$3,942,095.00

VEGETABLES CONTINUED

Product	Acreage	Total Yield	Total Value
TOTALS FORWARD	7,683		\$3,942,095.00
Potatoes, Irish	327	57,225 100# Sax	200,288.00
Radish	90	18,000 Crates	63,000.00
Salsify	9	2,700 Crates	6,750.00
Seasoning Plants	6	60,000 Bunches	30,000.00
Spinach	120	21,000 Crates	31,500.00
Squash:			
Summer	37	27,750 L. A. Lugs	27,750.00
Winter	23	230 Tons	9,200.00
Tomatoes	24	6,360 L. A. Lugs	15,264.00
Turnips	16	3,600 Crates	10,800.00
Miscellaneous Vegetables	23	-----	14,535.00
TOTALS	8,358		\$4,351,182.00

* "Crates" means standard lettuce crate.

CUT FLOWERS

FIELD GROWN

Product	Acreage	Total Value
Acacia	85	\$ 38,250.00
Alstroemeria	20	36,000.00
Asters	43	103,200.00
Calla Lilies	163	390,000.00
Chrysanthemums	193	1,396,072.00
Gladiolus	76	126,000.00
Heather*	300	456,000.00
Iris (Dutch)	18	35,100.00
Marguerites	17	29,750.00
Narcissus	50	55,200.00
Shasta Daisies	8	18,000.00
Stocks	157	235,500.00
Strawflowers	40	60,900.00
Violets	27	162,000.00
Bulbs **962,500		127,025.00
Miscellaneous Flowers	98	147,000.00
TOTALS	1,295	\$3,415,997.00
* 285 Producing acres.		
** Includes bulbs, corms, rhizomes and tubers.		

GLASS HOUSE GROWN

Product	Square Footage*	Total Value
Carnations	277,225	\$ 235,641.00
Ferns	838,868	419,434.00
Gardenias	557,400	735,768.00
Orchids	107,880	114,244.00
Roses**	245,125	342,748.00
Snapdragons	39,855	23,115.00
Sweet Peas	29,710	16,340.00
Miscellaneous Cut Flowers	43,480	23,914.00
Potted Plants	293,228	263,905.00
Bedding Plants	126,835	115,419.00
Propagated Nursery Stock	89,609	289,061.00
TOTALS	2,649,215	\$2,579,589.00

TOTAL VALUE, ALL FLOWERS \$5,995,586.00

* Actual area covered by glass - 2,721,427 sq. ft.

** Includes 32,900 sq. ft. of Baby Roses.

(307 Growers - 129 Glass Ranges)

FIELD CROPS

Product	Acreage	Total Yield	Total Value
Barley (Grain)	2,148	33,509 100# Sax	\$ 83,772.00
Flax (Seed)*	11,237	126,304 Bu.	789,399.00
Hay	8,934	16,975 Tons	509,238.00
Oats (Grain)	4,579	57,238 100# Sax	143,094.00
Vetch (Seed)	140	700 100# Sax	7,000.00
Wheat	32	256 100# Sax	1,216.00
TOTALS	27,070		\$1,533,719.00

FRUIT AND NUT CROPS

Product	Acreage	Total Yield	Total Value
Apples	81	110 Tons	\$ 5,233.00
Apricots (Dry)	11	11 Tons	704.00
Berries (Bush)	17	47 Tons	10,285.00
Grapes	33	41 Tons	1,650.00
Pears	75	263 Tons	31,500.00
Prunes (Dry)	130	96 Tons	12,980.00
Strawberries	7	5,915 Crates	11,830.00
Walnuts (English)	127	17 Tons	7,590.00
TOTALS	481		\$ 81,772.00

* Yield and income per acre based on flax after re-cleaning.

BEEES AND LIVESTOCK

		Total Income
Apiary	1,755 Colonies	\$ 6,055.00
Beef	2,717 Head	166,584.00
Dairy	10,747 Head	2,275,091.00
Hogs	27,109 Head	1,522,062.00
Sheep	1,386 Head	18,819.00
<u>Poultry</u>		
Chickens	94,678 Birds	158,633.00
Ducks	181,444 Birds	380,761.00
Pigeons	11,300 Birds	55,596.00
Turkeys	6,886 Birds	74,369.00
TOTAL VALUE		\$4,657,970.00

- Note: 1. Figures obtained through the courtesy and assistance of livestock producers and feed dealers.
2. Number head includes breeding stock and increase.
3. "Income" includes only stock or products sold.

RECAPITULATION

Production Values

Vegetables	\$ 4,351,182.00
Flowers	5,995,586.00
Field.	1,533,719.00
Fruit and Nut Crops.	81,772.00
Bees and Livestock	4,657,970.00

\$16,620,229.00
