

June 10, 2024

Luis Topete
Planning and Building Department
455 County Center,
2nd Floor Mail Drop PLN122
Redwood City, CA 94063

RE: PLN2000-00352 – Parking Lot Clarification

Mr Topete –

We note that the design shown in Staff Report Attachment C is different than the one described throughout the Staff report.^{1 2 3} This discrepancy should be addressed prior to action by the Planning Commission so as to avoid ambiguity as to what is being considered for approval. Given the level of community concern regarding paving the public play area, we encourage the Planning Commission to correct the discrepancy and reissue for public review and comment.

The design shown in Attachment C (aka 2024 design) is approximately 65% larger and further into the public play field than the 2013 design in the report (See Exhibit 1).

We very much appreciate the difficult job you have juggling competing priorities and appreciate any clarification you can provide ahead of this Wednesday's Public Hearing.

Sincerely,

/s/

/s/

Katie Garlinghouse
300 La Cuesta Dr
Portola Valley, CA 94028

Matt Garlinghouse

¹ “revert back to the design of the new driveway and parking lot improvements as approved by the Planning Commission on 07/24/2013 (Chronology, March 8, 2024, Page 9)

² “On March 8, 2024, Woodland School submitted a letter specifying their decision to revert back to the design of the new driveway and parking lot improvements approved by the Planning Commission in 2013 (providing 14 additional spaces) before the 2017 minor modification approval. (Discussion, Condition 2, Page 11)

³ “On March 8, 2024, Woodland School submitted a letter specifying their decision to revert back to the design of the new driveway and parking lot improvements as approved by the Planning Commission in 2013 before the 2017 minor modification approval. (2017 Minor Modification, Page 26)

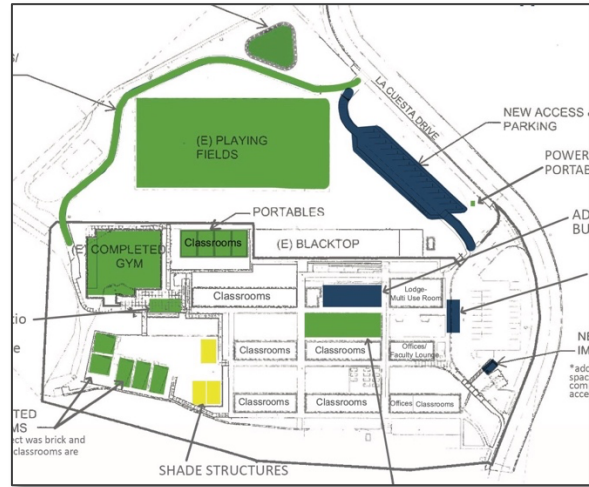
Exhibit 1 – Ambiguity of Staff Report - 2013 or 2024 Design

Staff report states that the applicant requested to “revert back to the design of the new driveway and parking lot improvements as approved by the Planning Commission on 07/24/2013” however Attachment C shows a new design.

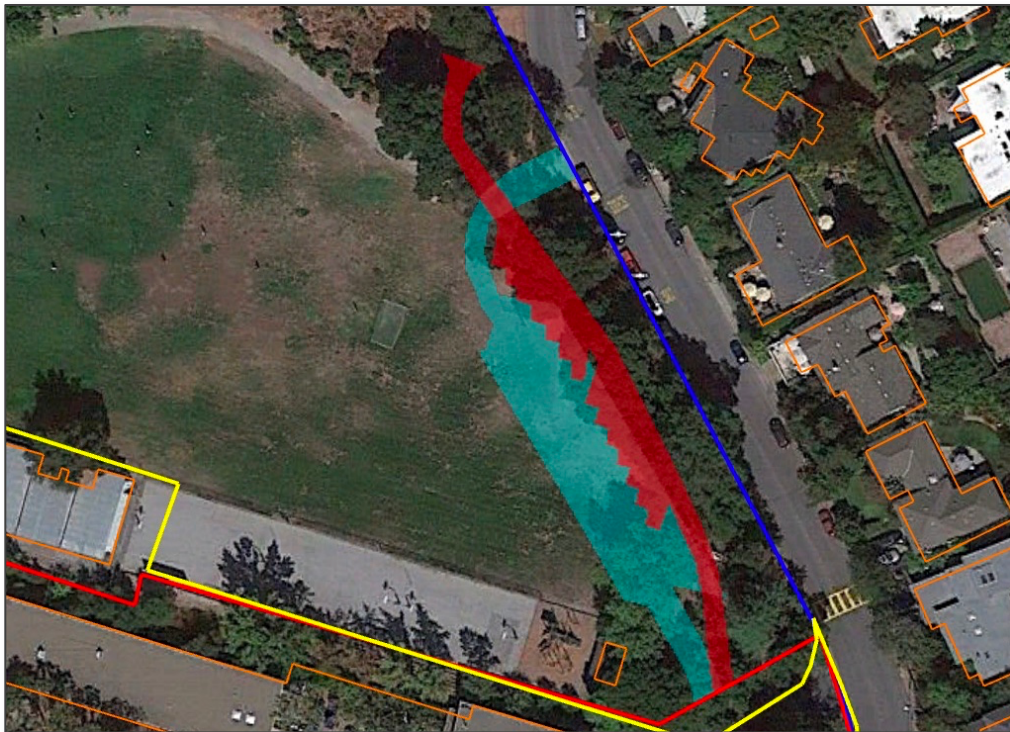
2013 Design as approved by the Planning Commission



2024 Design as shown in the Staff Report released on June 5, 2024



Comparison of the 2013 design and 2024 design showing the 2024 design is 65% larger further into the public play area





**Las Lomas
Elementary
School District**

Inclusive. Engaging. Inspiring.

District Office

1011 Altschul Avenue
Menlo Park, CA 94025

(650) 854-6311

www.llesd.org

Re: PLN2000-00352

June 10, 2024

Dear Chair Gupta and Members of the Planning Commission,

On behalf of the Las Lomas Elementary School District, we're writing in regard to our tenant's application to operate a school at 360 La Cuesta Drive in Portola Valley.

We respectfully request that the Commission:

1. Establishes conditions of approval that reflect the MOU agreed upon by the Ladera Community Association (LCA) and Woodland School.
2. Does not add language to the conditions that will accommodate school meetings/events during weekend hours.

It is critical that the Planning Department helps ensure compliance with the permit; as such, we request the county diligently perform its oversight responsibilities in this matter and promptly advise our district if complaints of nonadherence are made to the department.

Thank you for your consideration.

Sincerely,

Heather Hopkins
Board President

Dr. Beth Polito
Superintendent