

CAL FIRE NEWS RELEASE

California Department of Forestry and Fire Protection



San Mateo & Santa Cruz Unit

CONTACT: Cecile Juliette
Information Officer
(650) 477-0379

RELEASE
DATE: September 18, 2022

Maple Way Fuel Reduction Project Set to Begin

BELMONT, CA – CAL FIRE and San Francisco Public Utilities Commission (SFPUC) are set to begin the Maple Way Fuel Reduction Project at the end of September.

CAL FIRE Vegetation Management Forester Sarah Collamer said, “We are really excited about this project, because it is a team effort involving several different agencies working together to do what’s best to protect this community. We are ready to get started on this project.”

In this phase of the project, the SFPUC and its contractors will use large equipment to masticate, or mulch the vegetation in key areas into small chunks. This helps lower the fire danger by reducing the amount of combustible vegetation adjacent to private property and Edgewood County Park in San Mateo County.

There will be some noise and traffic impacts to the immediate area during work hours while the project is underway. This work is expected to last a few weeks. SFPUC biologists have already surveyed the area for sensitive plants and animals. Fall is a good time to complete this type of project as bird nesting season has ended, and annual plants have gone to seed. Reptiles and amphibians will not be active.

The SFPUC Peninsula Watershed is approximately 23,000 acres of land that collects drinking water in three reservoirs, which provides drinking water to about one million people in northern San Mateo County and San Francisco. The Peninsula Watershed also includes a vast array of rare and sensitive native plant and animal species.

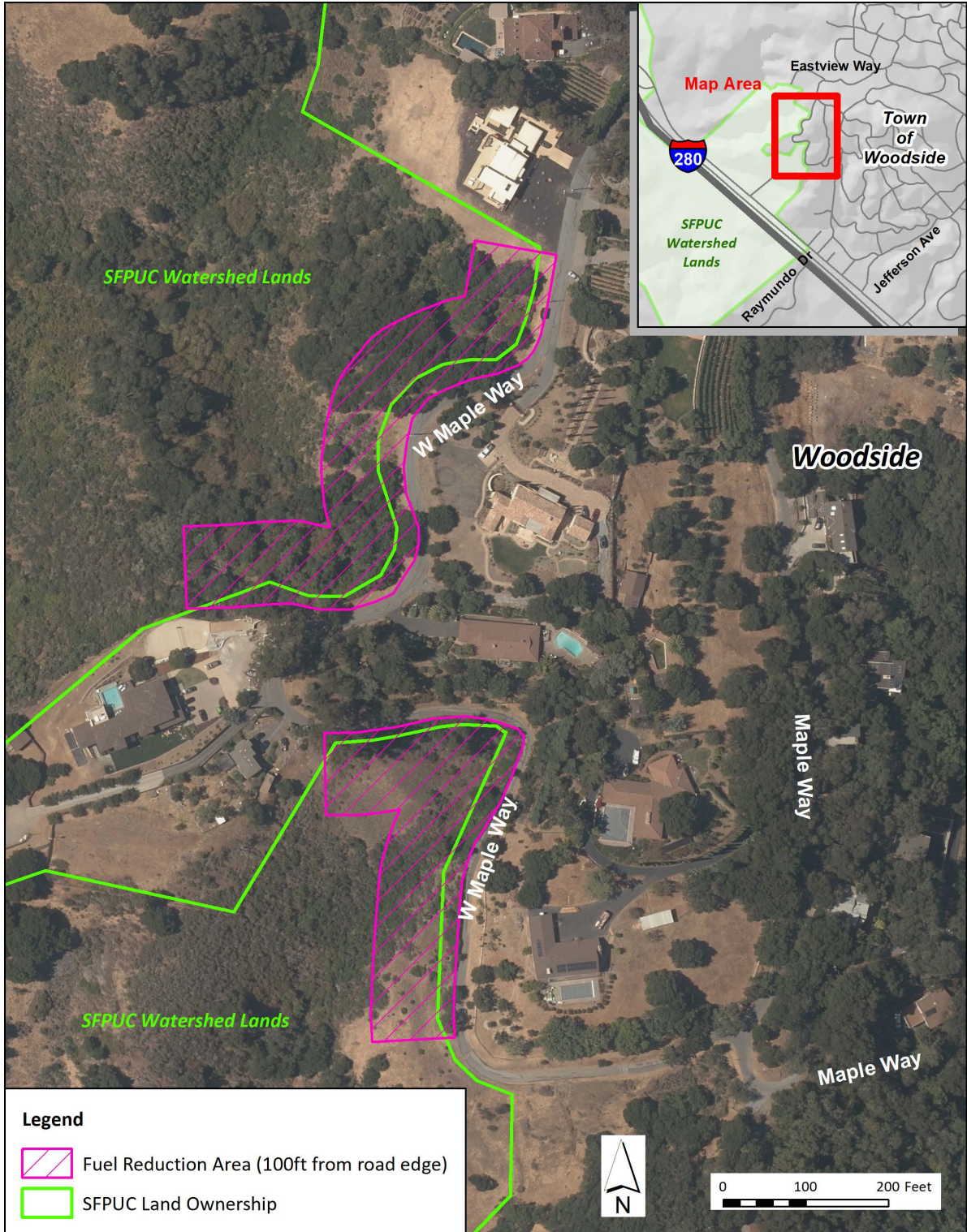
“An uncontrolled fire here could impact the drinking water for almost one million people and threaten the communities that surround us,” said SFPUC General Manager Dennis Herrera. “We appreciate our partnership with CAL FIRE to help protect these lands from the threat of wildfire.”

This project is part of a larger series of vegetation reduction projects around the Emerald Hills community. In the next phase of the Maple Way Fuel Reduction Project in a few months, CAL FIRE will bring in hand crews to continue reducing fuels in the area. The public will be notified before the next phase begins.

For additional information on how to be prepared for wildfires, as well as tips to prevent wildfires, visit [readyforwildfire.org](https://www.readyforwildfire.org).



Maple Way Fuel Reduction Project



H:\Jeremy\Pen\Projects\Misc_projects\Maple_Way_fuel_reduction2.mxd 9/14/2022 jlukins



Note: Boundaries are approximate only

**Maple Way
Fuel Reduction Project**



- Midpeninsula Regional Open Space District
- Redwood City, City of
- San Francisco - Public Utilities Commission, City and County of
- San Mateo County Parks and Recreation Dept., County of
- Edgewood Fire
- CAL FIRE/PG&E Shaded Fuelbreak
- Structures
- Expressway
- Local Road
- Trail
- Unpaved Road/Trail

Emerald Hills Fuel Reduction Planning Map

0 0.05 0.1 0.2 0.3 0.4 0.5 Miles

