

San Mateo County

Off-leash Dog Pilot Program Data Summary:
Monitoring Period 10 (March 2023 – April 2023)
Pilot Program Data Collection

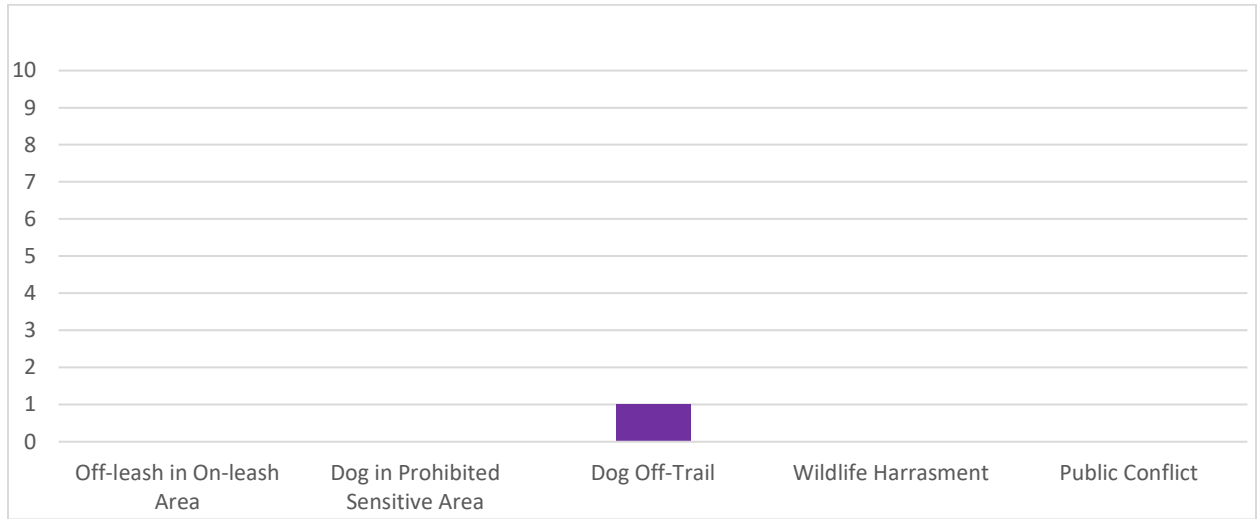
Table 1. Overall Dog Monitoring Results at Quarry Park as measured for March 2023 and April 2023.

	Standards	Quarry Park
Presence of dog waste ¹	No more than 20 occurrences in one month	18 instances per month
Harassment of wildlife	Dogs observed chasing or harassing wildlife two times over a 60-day period	0 instances
Dog entry to sensitive areas	No dogs observed entering Parks defined and signed sensitive areas	0 instances
Dogs traveling off-trail	Dogs observed traveling at 10 feet or more off trail	1 instances
Leash compliance for on-leash trails ²	70% of parties with dogs will have their dogs on a leash when using an on-leash trail	100% leash compliance
Interactions with dogs and visitors	Any dog is observed exhibiting unwelcome behavior(s) to other dogs or visitors 10 times per month	0 instances

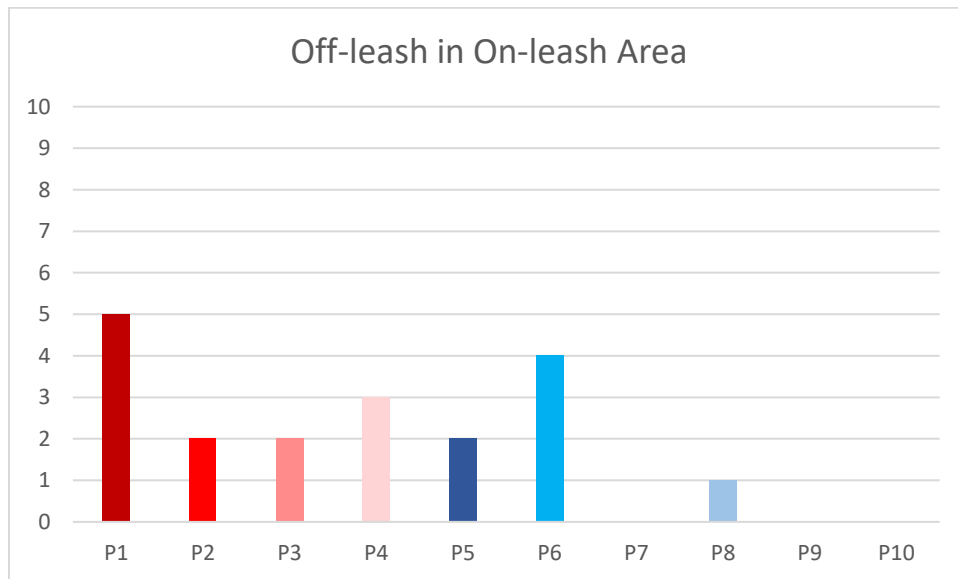
¹ “Per month” data for this row was calculated by averaging the total observations for each month indicated in table 2.

² Leash compliance data was calculated as the average percentage of “on-leash dogs in on-leash trails” out of “all dogs in on-leash trails” for the monitoring period.

Graph 1. Dog Monitoring Results (excluding “Presence of Dog Waste”) at Quarry Park as measured for March 2023 and April 2023.

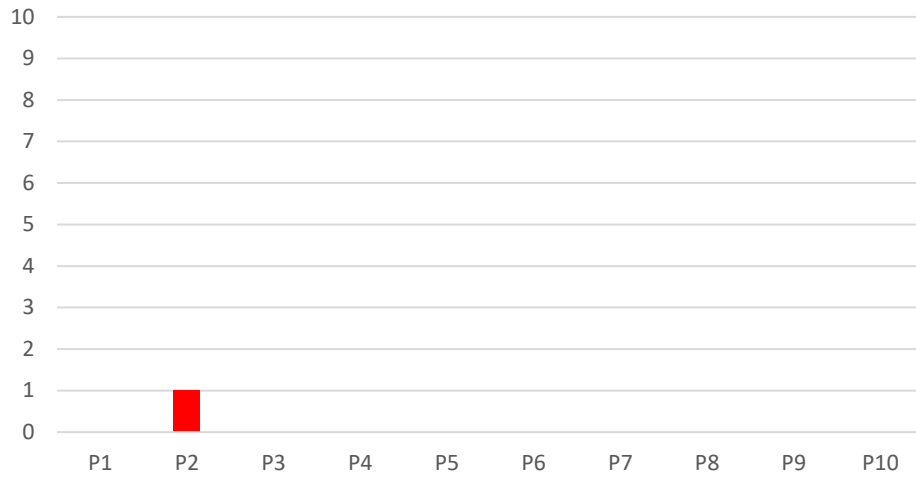


Graphs 2a-d. Change in Dog Monitoring Results (excluding “Presence of Dog Waste”) at Quarry Park throughout all monitoring periods³.

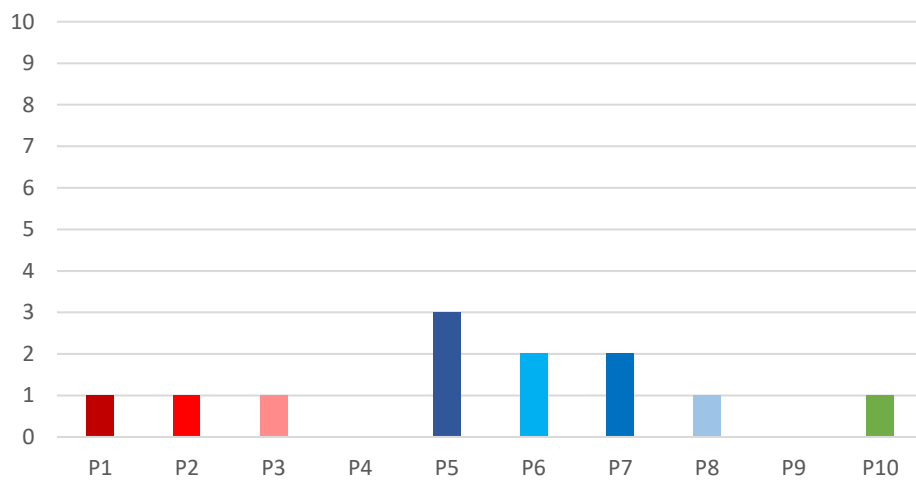


³ “Wildlife harassment” is also excluded, due to there being no observed instances for any of the monitoring periods.

Dog in Prohibited Sensitive Area



Dog Off-Trail



Public Conflict

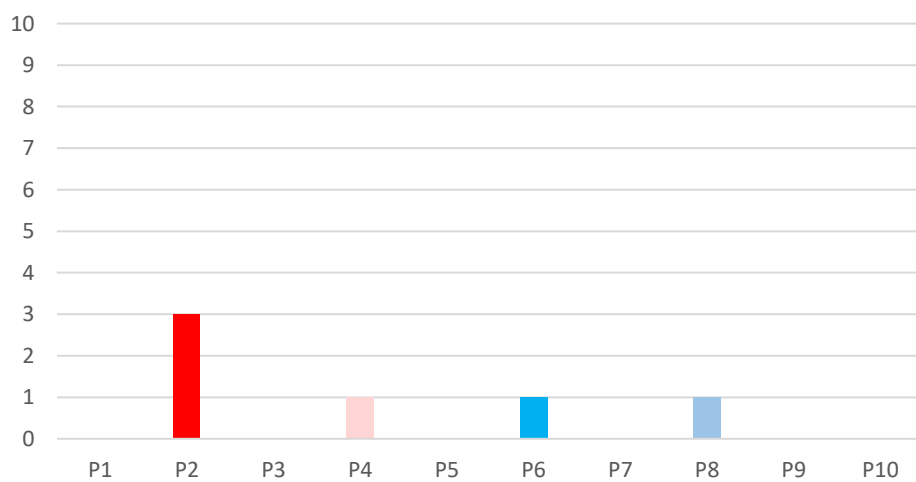


Table 2. Monthly Dog Monitoring Results for “Presence of Dog Waste” and “Interactions with Dogs and Visitors” at Quarry Park as measured for March 2023 and April 2023.

		March	April	Total
Quarry Park	Presence of Dog Waste	10 instances	26 instances	36 instances
	Interactions with Dogs and Visitors	0 instance	0 instances	0 instance

Graph 3. Dog Waste Comparison at Quarry Park as measured for March 2023 and April 2023.

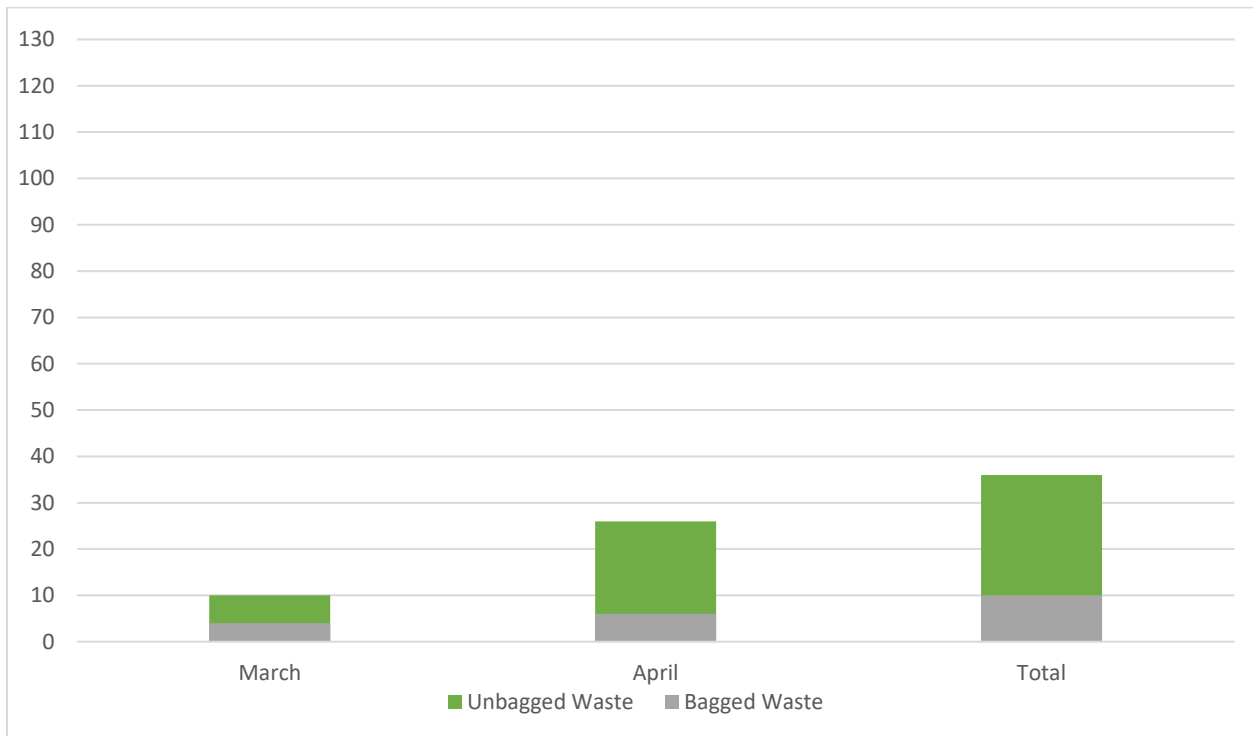


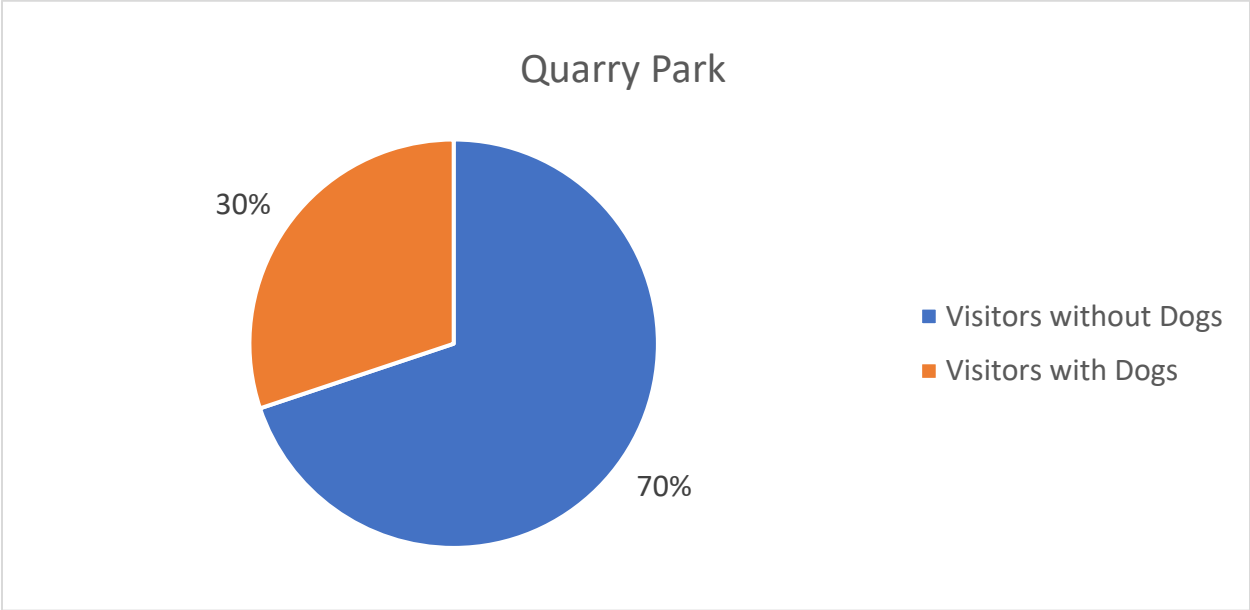
Table 3. Visitor Demographics at Quarry Park as measured for March 2023 and April 2023.

	Quarry Park	
Total visitors overall	345	
	Total	% of visitors overall
Visitors without dogs	276	70%
Visitors with dogs	119	30%

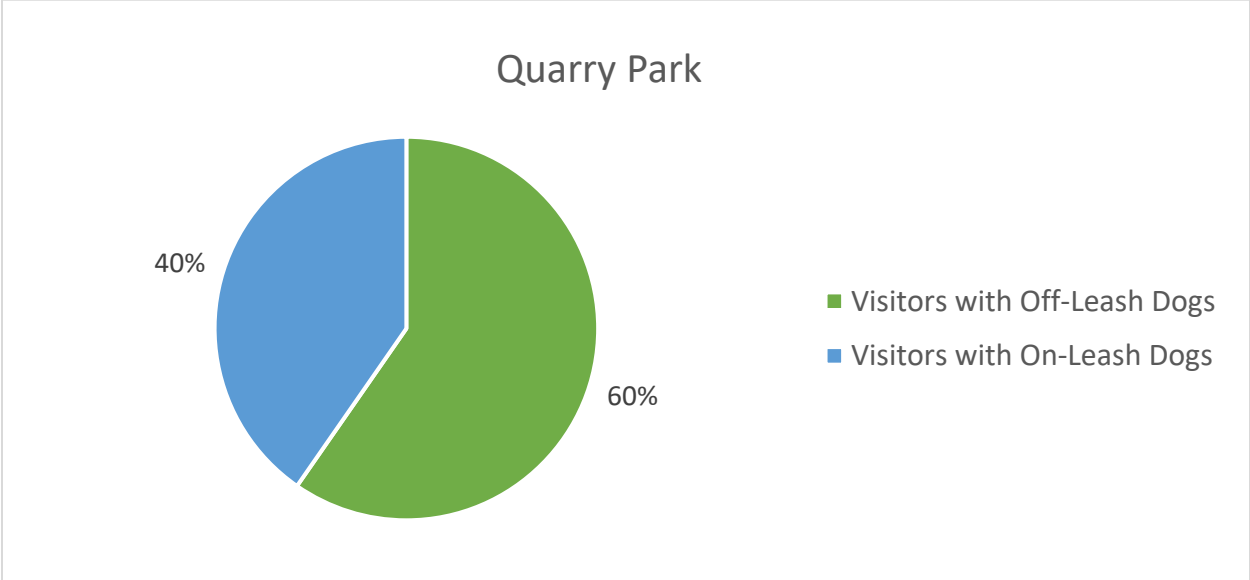
Table 4. Demographics of Visitors with Dogs at Quarry Park as measured for March 2023 and April 2023.

	Quarry Park	
Total visitors with dogs	119	
	Total	% of visitors with dogs
Visitors with off-leash dogs	71	60%
Visitors with on-leash dogs	48	40%

Graph 4. Percentage of Visitors with or without Dogs out of Total Visitors at Quarry Park as measured for March 2023 and April 2023.

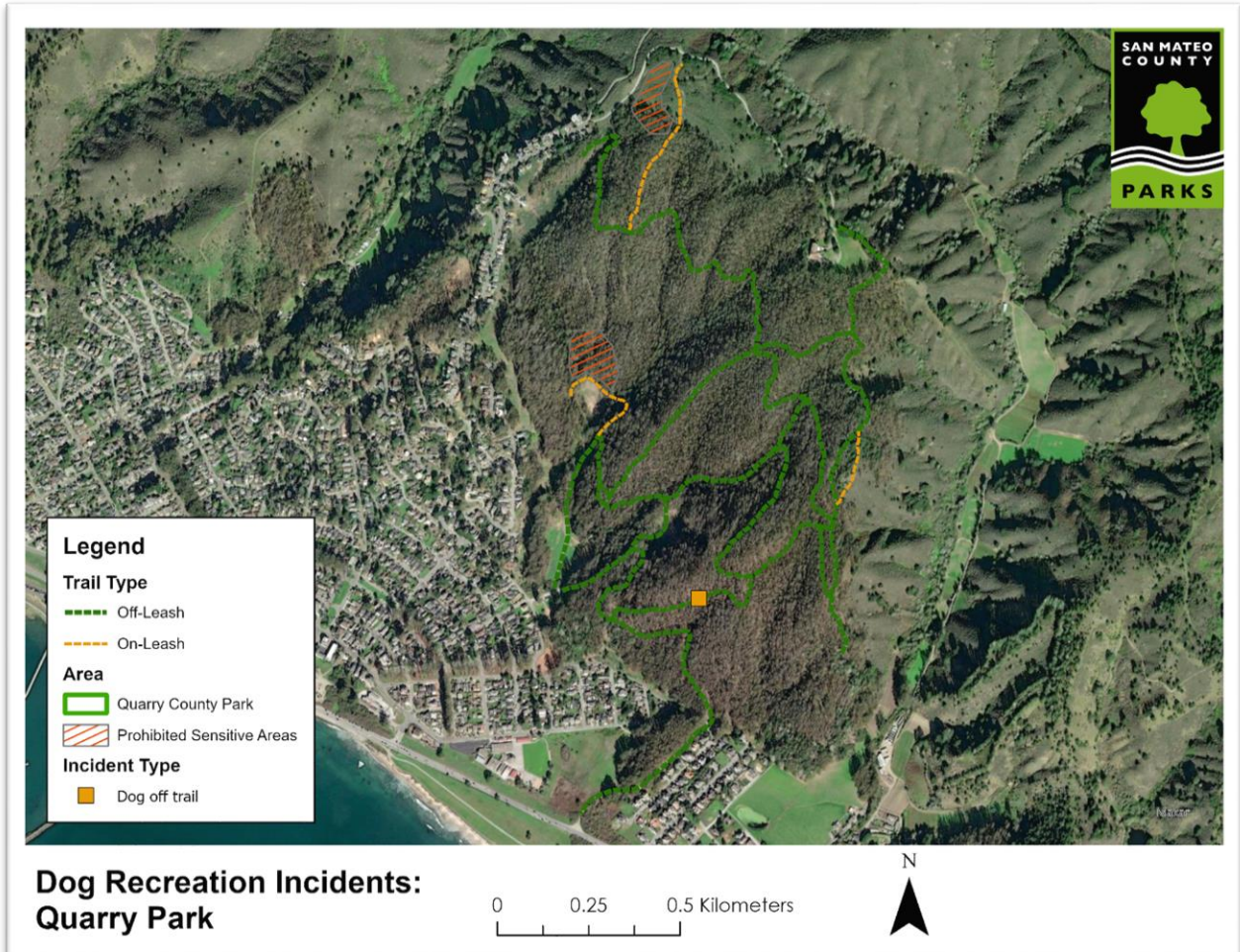


Graph 5. Percentage of Visitors with Off-Leash or On-Leash Dogs out of Visitors with Dogs at Quarry Park as measured for March 2023 and April 2023.

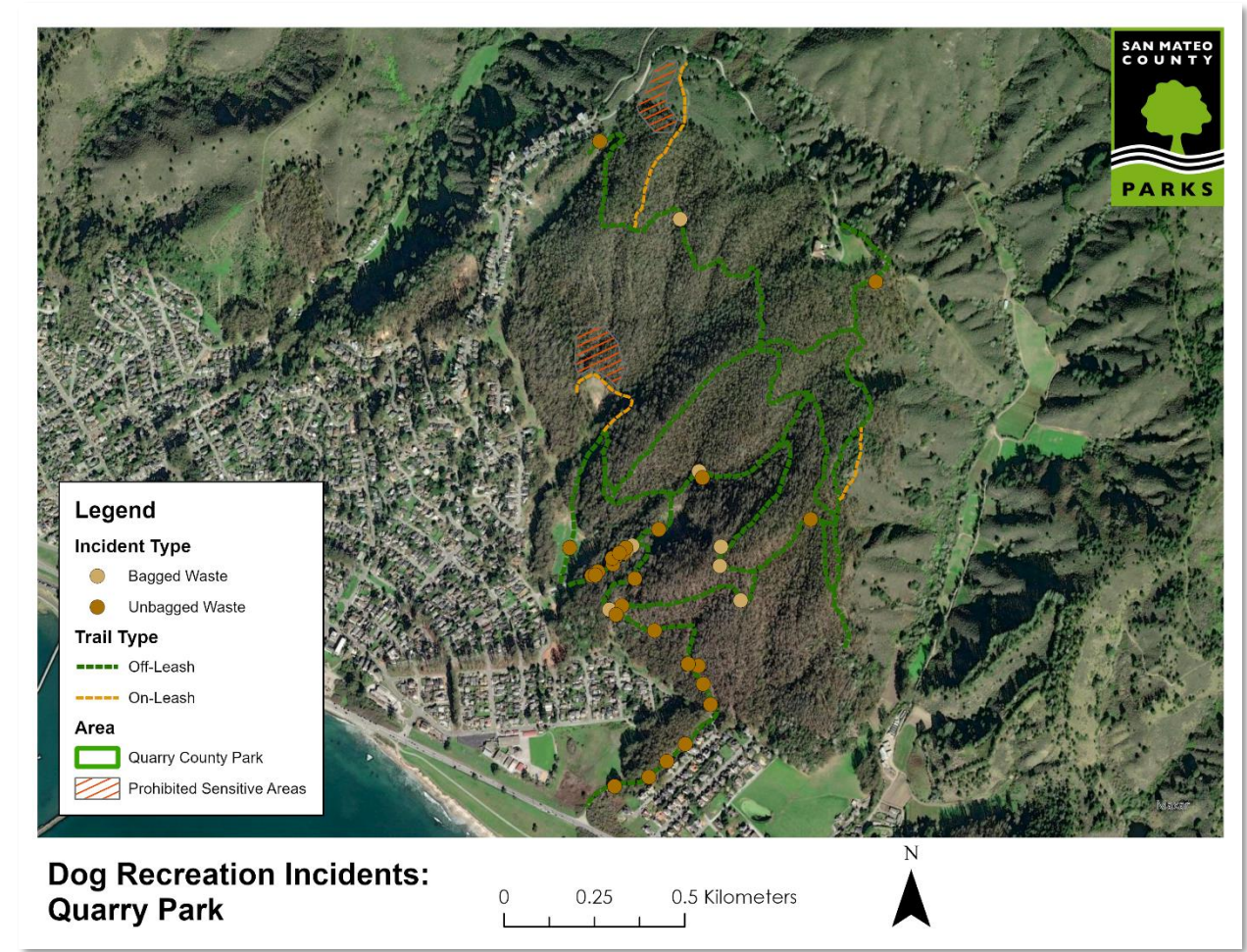


Maps

Map 1. Dog Monitoring Criteria (excluding “Presence of Dog Waste”) at Quarry Park as measured for March 2023 and April 2023.



Map 2. Dog Waste Observations at Quarry Park as measured for March 2023 and April 2023.



I. Summary of Results

All criteria standards were met during Monitoring Period 10. When compared to Monitoring Period 9, leash compliance remained at 100%, and instances of dogs traveling off-trail increased from zero instances to one instance for Monitoring Period 10. Instances of harassment of wildlife, entry into prohibited sensitive areas, and public conflicts all remained at zero.

In terms of visitor demographics, Quarry Park had 395 total visitors observed during Monitoring Period 10, with 30% of these visitors bringing dogs and 70% visiting without dogs. Sixty percent of visitors with dogs at Quarry Park let their dogs off-leash, while 40% kept them on-leash. In comparison to the previous monitoring period, the proportion of visitors without dogs to visitors with dogs decreased from 59% of all observed visitors to 30%. The ratio between the visitors with off-leash dogs to on-leash dogs shifted from 72% off-leash and 28% on-leash in Monitoring Period 9 to 60% off-leash and 40% on-leash in Monitoring Period 10. To date, no evidence exists to indicate that the off-leash dog recreation pilot program has adversely impacted people's ability to enjoy Quarry Park without dogs.

This report represents the final Monitoring Period for the Off-Leash Dog Recreation Pilot program for Quarry Park. The Pilot Program intended to monitor off-leash dog recreation for a 12-month period, which occurred from the beginning of May 2022 through the end of April 2023. An additional 10 months of baseline monitoring occurred at Quarry Park prior to the official start of the pilot program (July 2021 through April 2022), to provide a comparison to existing conditions related to dog recreation at the park. Parks Department Staff is working to summarize the findings of the Pilot Program Monitoring, and will report back to the community and park users.

II. Courses of Action

In accordance with the Off-leash Dog Recreation Pilot Program's IS/MND, the Department has posted the following sign in Quarry Park:



Quarry Park Off-Leash Dog Pilot is Underway!

San Mateo County Parks is conducting a one-year pilot program to explore allowing dogs and their owners to enjoy off-leash use of most trails in Quarry Park.

Not Disposing of Dog Waste Can Impact Off-Leash Pilot Success

For two consecutive monitoring periods the amount of dog waste left on trails has exceeded the pilot standard. For the pilot to succeed and for off-leash recreation to continue, dog waste must be picked up, bagged, and disposed of in a trash can.

Also remember:

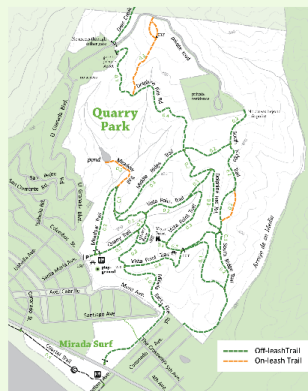
- Keep dogs on trails and out of sensitive habitat.
- No more than three dogs per person (with a leash for each dog) and no more than two off leash.
- Keep dog(s) within 25' and under voice/sight control.

Let's all work together to keep off-leash dog recreation in the park!



Learn more about the Pilot Program
<https://www.smcgov.org/parks/leash-dog-pilot-program-quarry-park>

Leash Your Dog in Designated Areas



Look for signs:



Off-leash dogs OK



Dogs on leash OK



No dogs

The Department has also installed two additional dog waste stations at Mirada Surf East.

As there have been two monitoring periods during the pilot program where dog waste observed exceeds the standard that was set, the Department will continue monitoring, but will need to re-evaluate the standards set and adjust management options accordingly. The figure below is included in the adaptive management plan for the off-leash dog recreation pilot, identifying the decision-making that the Department will need to make regarding the pilot and appropriate management.

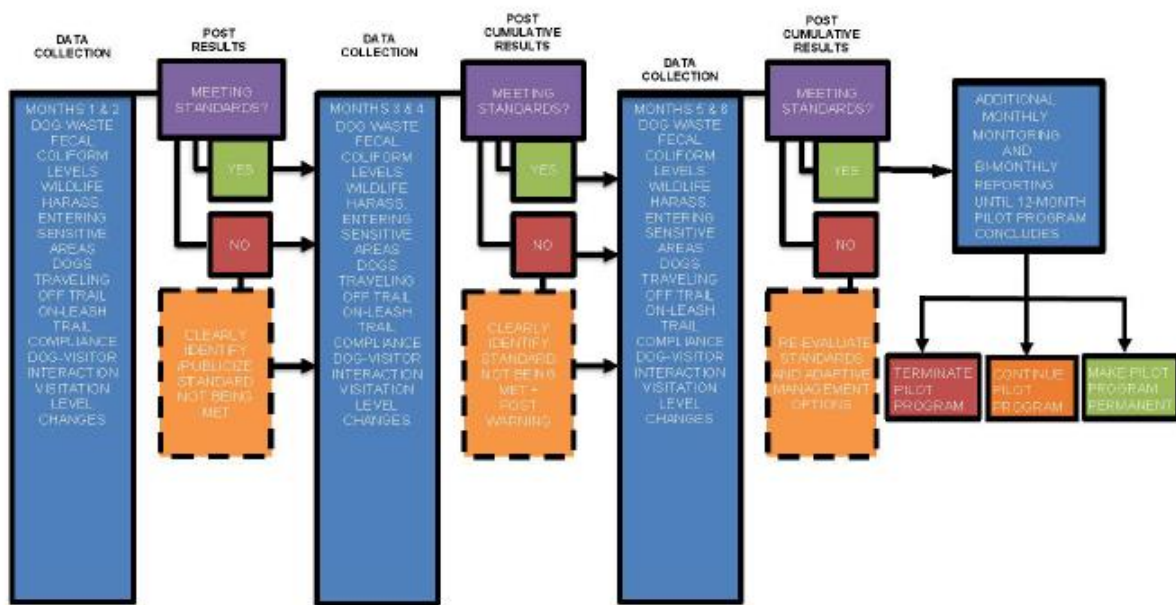


Figure 4. Adaptive Management Decision Flow Chart